

Donning of Dräger Saver CF



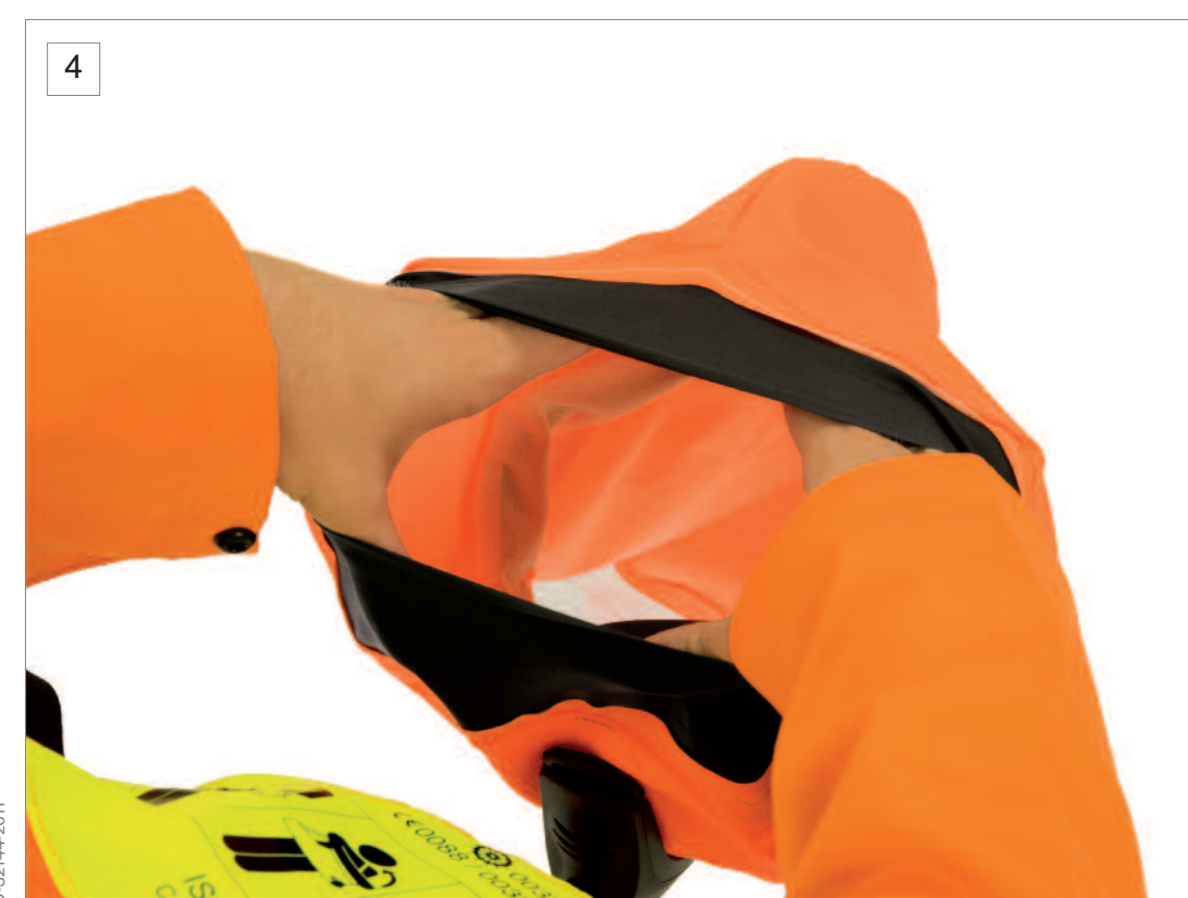
1 Place neck strap of carrying bag over head. Adjust length of strap until equipment sits in the centre of chest. Fix waistbelt, if fitted, and adjust by pulling the free end until equipment is secure and comfortable.



2 Grip the loop on the lid of the carrying bag and pull firmly upward to break the anti-tamper tag. Open the flap of the bag which then releases the locking clip from the valve turning on the air supply to the hood.



3 Immediately remove the hood from the carrying bag.



4 Place both hands inside the hood neck seal, place chin inside half mask and pull hood over head from front to back.



5 Position half mask over nose and mouth and breath normally.



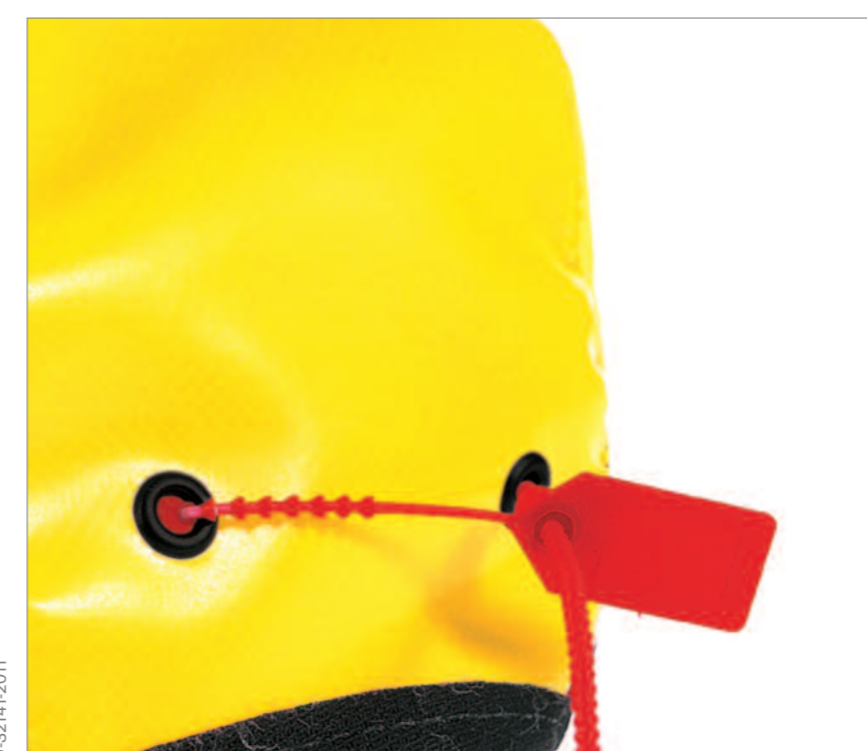
6 Immediately leave the hazardous area by the shortest and safest route.

Safety Warning: Do not remove the equipment until in a safe area and clear of hazard.

PRE-OPERATIONAL CHECKS



Check contents gauge ensuring the cylinder is fully pressurised (i.e. 200 bar). The gauge needle must be inside the green segment of the gauge face.



An intact anti-tamper device ensures full performance. If this device is broken the unit must be checked.

VERSIONS



Dräger Saver CF Soft Bag



Dräger Saver CF Hard Case

Donning of Dräger Saver PP



1 Place neck strap of carrying case over head. Adjust length of strap until equipment sits in the centre of chest. Fix waistbelt, if fitted, and adjust by pulling the free end until equipment is secure and comfortable.



2 Grip the loop on the lid of the carrying case and pull firmly upward to break the anti-tamper tag. Open the flap of the case which then releases the locking clip from the valve turning on the air supply to the full-face mask.



3 Lift the full-face mask from the carrying case and immediately put on the mask.



4 Donning the full-face mask: Using one hand, hold the mask onto the face and with the other hand, pull the elastic head harness over the back of head, locating the harness centrally with the back of the head.



5 Tighten both lower straps evenly towards back of the head.



6 On achieving the face seal and on taking your first breath of inhalation the lung demand valve will automatically switch to positive pressure starting air supply to mask. Breathe normally and immediately leave the hazardous area by shortest and safest escape route.
Safety Warning: Do not remove the equipment until in a safe area and clear of hazard.

PRE-OPERATIONAL CHECKS



Check contents gauge ensuring the cylinder is fully pressurised (i.e. 200 bar). The gauge needle must be inside the green segment of the gauge face.



An intact anti-tamper device ensures full performance. If this device is broken the unit must be checked.

VERSIONS



Dräger Saver PP Soft Bag



Dräger Saver PP Hard Case